

KEY FEATURES

Enables Configuration & Management Ease Over the Network



Decreases Downtime, Increases Productivity



Improves Security, Reduces Help Desk Calls

PRODUCT OVERVIEW

AmZetta introduces the zMAN Director, your ultimate solution for centralized management of zTC Thin Clients. As a robust management server, zMAN Director empowers seamless remote control, ensuring effortless access to device details, statuses, and a suite of management functionalities. From Power Management to Profiling and Device settings, zMAN Director offers a comprehensive array of features to streamline operations.

At the heart of zMAN Director lies its centralized Manager, a powerful tool that simplifies the configuration and management of client devices across the network. Gone are the days of tedious manual interventions; with zMAN Director, tasks are streamlined, allowing for efficient control and optimization of resources. Whether adjusting power settings, creating personalized profiles, or fine-tuning device configurations, zMAN Director empowers administrators with intuitive controls and robust security features, redefining the paradigm of device management with efficiency and ease.

zMAN Components

- | | |
|---|--|
| ■ zMAN Director - Centralized Management Station | ■ zTC - Client Component |
| ■ zDM - Device Management Server Component | ■ zID - Identity Provider service |

zMAN Features

The zMAN Director offers a comprehensive dashboard view, providing an overview of system and device statuses. Login and authentication features ensure secure access to the management console, while device provisioning simplifies the setup and deployment of new devices. Connection profiles manage and apply network configurations to devices, and multi-tenancy supports multiple user groups and organizational structures. High availability (HA) configurations and support for both cloud and on-premise deployments offer flexibility and reliability for various infrastructure needs.

Administrators can manage power settings to optimize energy use, perform factory resets to return devices to default settings, and customize client device settings remotely. The zMAN Director also includes certificate management for secure communications, remote firmware updates, and FTP configuration for file transfers. ISO-based deployment simplifies the deployment process, and web SSH and web VNC support provide remote access to thin clients for troubleshooting. Additionally, the zDiag feature allows IT managers to perform diagnostics, maintenance, and updates remotely, even if a device is not working.

zTC Feature Set

The zTC thin clients include a robust set of features:

- **Offline Firmware Updates and Profile Support:** Enable updates and profile management without network connectivity.
- **Auto Policy Configuration After Reboot:** Applies predefined policies automatically.
- **Profiles:** Manage user-specific settings and configurations.
- **Power Schedule Feature:** Allows for energy-efficient scheduling.
- **Auto-Login for Profiles:** Ensures a seamless user experience.

zMAN Director – Architecture

The zMAN Director features a distributed architecture that enables load balancing, making it capable of managing a larger number of devices. The implementation of the LwM2M protocol supports a wide range of future devices, including Android and iOS. Built on Kubernetes infrastructure, the zMAN Director ensures scalability and high availability, making it suitable for large-scale deployments and critical environments.

zMAN Director – Hardware Requirements

To run zMAN Director, the system should have:

The zDM server component requires:

<ul style="list-style-type: none">■ Minimum of 4 CPU cores■ 16 GB of RAM■ 256 GB of free disk space	<ul style="list-style-type: none">■ At least 2 CPU cores■ 2 GB of RAM■ 32 GB of free disk space
--	--

Upcoming Features

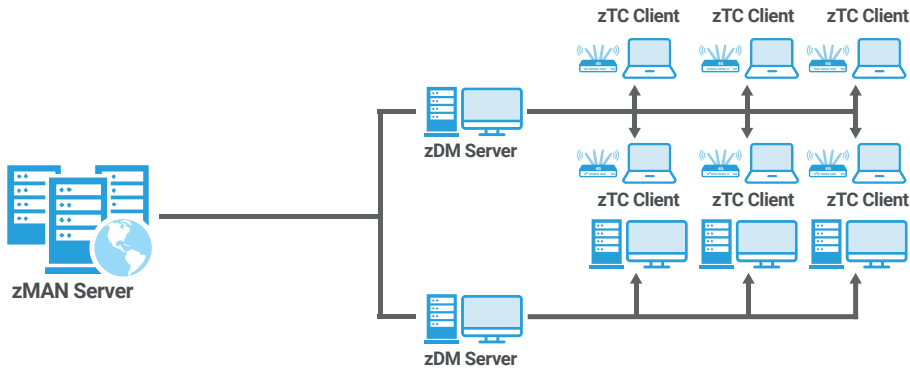
Future enhancements to the zMAN Director include ISO-based deployment for simplified installation processes, integration of zMAN and zDM for streamlined deployment, and web SSH and web VNC support for enhanced remote management capabilities. Debugging with zDiag will also improve remote diagnostic and troubleshooting capabilities.

Conclusion

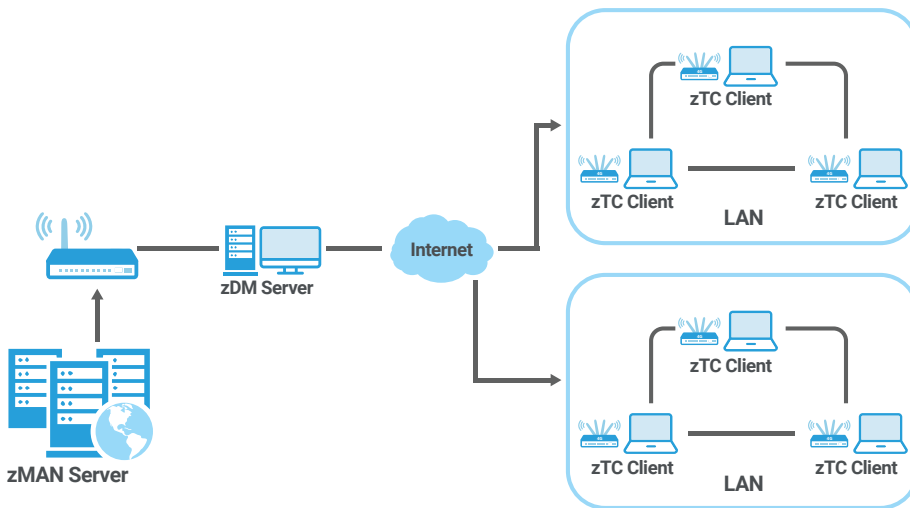
zMAN Director represents a significant leap forward in thin client management. By leveraging its comprehensive feature set, organizations can achieve greater efficiency, enhanced security, and streamlined operations. Whether deployed on-premises or in the cloud, zMAN Director offers the flexibility and scalability to meet the demands of modern IT environments.

zMAN Network Models

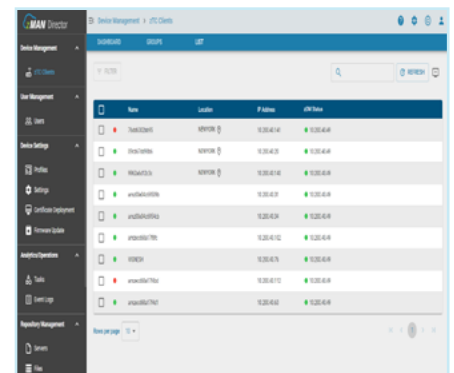
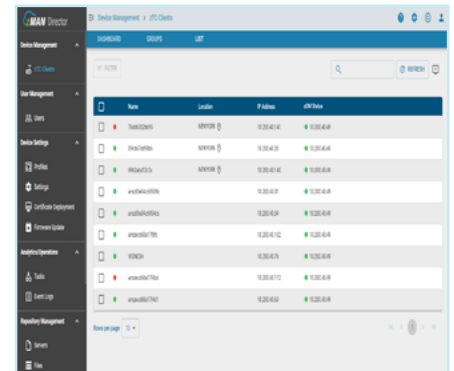
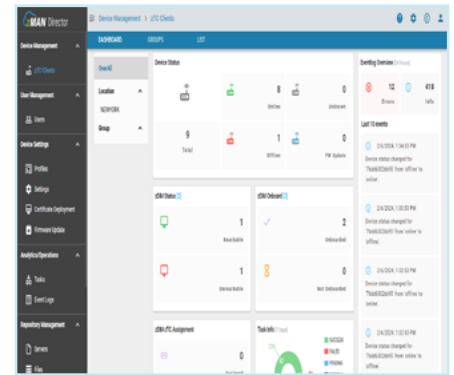
LAN Model



WAN Model



zMAN Director Screen Shots



How to Get Started?

AmZetta offers free 30-day evaluation with no obligation to purchase. Simply visit <https://AmZetta.com/Eval> and complete the Evaluation Form. An AmZetta Solutions Engineer will help you get started with your evaluation.