



ACI KEY FEATURES

- Multi-Path Connectivity for Higher Availability of Internet Connection
- SD-WAN Features Available for Single Office Users
- Seamlessly Integrates into Existing Branch or Home Network

PRODUCT OVERVIEW **Revolutionizing Connectivity for Small & Medium-Sized Businesses**

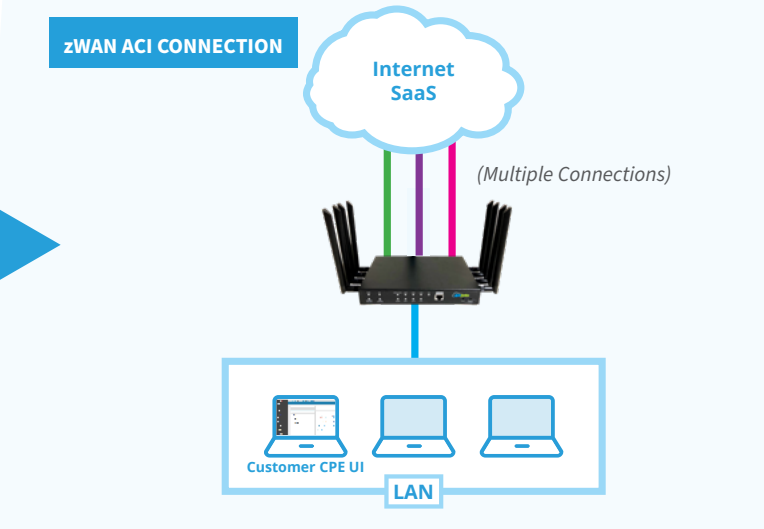
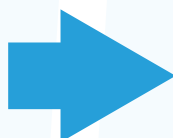
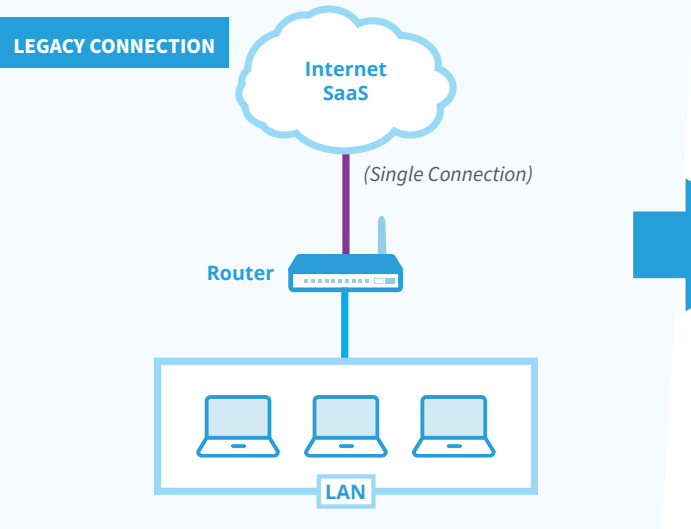
Always Connected Internet (ACI) is a HW based Network Appliance that is a part of the AmZetta zWAN SD-WAN product family. ACI delivers multiple WAN connections guaranteeing connectivity to the Internet without disruptions to small and medium sized organizations as well as a number of SD-WAN features that are usually reserved for enterprise level organizations.

Current Challenges

Most small to medium single office businesses operate with a single WAN connection. Often times these organizations resort to expensive low bandwidth MPLS for their internet connectivity. Relying on a single WAN can result in connectivity issues which can bring an organization to a halt. Utilizing a single connection can also result in a bandwidth crunch leading to poor performance for business critical applications or poor quality VoIP calls and Teams/Zoom conferences. In this model high priority applications are given the same access to bandwidth as low priority applications resulting in very inefficient utilization of available bandwidth.

How ACI Solves the Problems

The ACI network appliance is connected at a single office location and provides multiple public WAN connections. ACI eliminates the need for costly leased/dedicated lines such as MPLS. SD-WAN has typically been reserved for large enterprises with multiple locations, large budgets and teams of IT resources. AmZetta's zWAN SD-WAN solution uses standard public networks (such as Broadband, 4G LTE and 5G) making highly optimized, secure and resilient connectivity and SD-WAN functionality available for even the smallest of organizations.



Who is ACI For?

SD-WAN has typically been reserved for larger scale, multi-location enterprises due to cost and complexity. ACI is designed for the smaller, single location organizations who still require an always connected, highly efficient and secure internet connection. Not only will ACI deliver multi-path WAN connections but will also deliver SD-WAN functionality for better optimized connections for business critical applications, security and user experience.

Features & Benefits of ACI

- ACI HW is available in many HW configurations to meet your requirements
- Multi-Path WAN connectivity
 - Eliminates the need for expensive leased/dedicated MPLS
 - Utilization of lower cost higher bandwidth WAN options including
 - Broadband, LTE/5G
 - Flexible configurations – WAN connections can be set up in a HA configuration for automatic fo/fb, Link aggregation for increased bandwidth or path affinity where network traffic will automatically switch connections if high latency or packet loss is present.
 - Asymmetric Load Balancing
- SaaS breakout will eliminate network traffic to trusted SaaS applications from back hauling to the DC and allow a secure direct connection and increased application performance
- Dynamic data steering - Steer or route network traffic using one or multiple WAN links based on priority, network conditions or traffic patterns. Data packets are automatically steered to specific WAN links based on link availability, to balance network traffic, improve performance and to save costs.
- QoS based on Application Prioritization
- Security – IPS/IDS, Encryption, Ad-Blocking, Deep Packet Inspection
- Local Management
- Detailed Network Analytics
- Simple Deployment
- Remote Access

Conclusion

In summary, ACI brings enterprise-grade connectivity and SD-WAN capabilities within reach of small and medium-sized businesses. With its innovative features and benefits, ACI empowers organizations to stay connected, efficient, and secure in today's digital landscape. Experience seamless connectivity and elevate your business operations with ACI from AmZetta.

How to Get Started?

AmZetta offers free 30-day evaluation with no obligation to purchase. Simply visit <https://AmZetta.com/Eval> and complete the Evaluation Form. An AmZetta Solutions Engineer will contact you to get started in your evaluation.