



KEY FEATURES



Extended Corporate Security and Connectivity for Remote Branches and Remote Users



Full Hardware Solution Integrates Seamlessly into Existing Network



Improve Workers Productivity with Application & Website Reporting



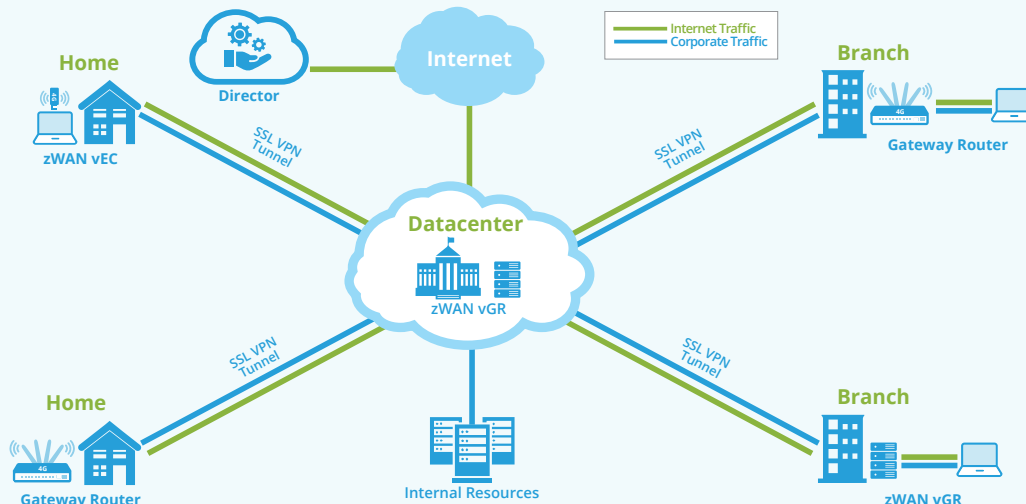
PRODUCT OVERVIEW

What is SD-WAN?

SD-WAN stands for Software Defined Wide Area Network. SD-WAN is a virtual network architecture that allows organizations to leverage multiple transport services such as Broadband, MPLS and LTE (5G/Wi-Fi) to securely connect data centers to branch offices and users to applications and services. The Software Defined (SDN) network separates the control plane from the data plane allowing for enhanced agility, manageability and complete visibility of the network. SD-WAN provides enhanced security, optimized performance, lower costs, and ease of deployment and management. An SD-WAN solution will enhance application performance, user productivity, reduce network expenses, unify network connectivity, and enable orchestration of application delivery across your network.

How Does an SD-WAN work?

SD-WAN utilizes a centralized controller that incorporates user defined application and routing policies to provide highly secure, dynamic, application-aware network traffic management. The SD-WAN utilizes the existing network underlay connectivity such as Broadband, MPLS and LTE and routes the data within the network using highly secure overlay tunnels that are encrypted. SD-WAN monitors the performance of the network and dynamically routes network traffic based on the QoS and SLA objectives for optimum connectivity of users to applications and services. This level of control allows for optimal delivery paths across any combination of network transport types. SD-WAN improves your TCO and makes the WAN much easier to deploy and manage.





Top Benefits of SD-WAN

SD-WAN utilizes can offer a myriad of benefits to your organization, from better performance, institutional security, ease of management and cost savings.

Dynamic Path Selection & Multi-Transport

SD-WANs use dynamic path selection to steer or route network traffic to one or multiple WAN links based on priority, network conditions or traffic patterns. Data packets are automatically steered to specific WAN links based on link availability, to balance network traffic or to save costs. The data packets are identified by the SD-WAN and then categorized by application, source, user and destination. This packet identification is used to route the data packets down the most optimal path which results in enhanced performance of applications. The dynamic path selection and data routing is configured to utilize your existing underlay connectivity such as Broadband, LTE, MPLS or WAN. The SD-WAN uses the underlay connectivity's characteristics such as cost (flat, usage based etc.), bandwidth, latency and jitter to make decisions on application steering to the appropriate path(s).

Centralized Management

SD-WAN allows network administrators to centrally manage their entire network fabric by pushing out policies to all the branches with ease. This also allows for quicker integration of new branches. Administrators can also have a full view of the network, leading to the possibility of easily pinpointing any network issues and then take immediate action to resolve those issues. This insight can also be used to figure out where optimizations can be implemented to improve the overall usage of the network.

Network Security

SD-WAN, at its core, supplies an organization's network with a secure fabric to trusted devices while leveraging insecure connectivity, such as the Internet. SD-WAN has in-built security features as well, such as stateful firewalls, IPS/IDS (Intrusion Prevention System/Intrusion Detection System), DNS filtering, Layer 7 firewall settings, deep packet inspection and much more. All these features are provided at the CPE level, without the need for traffic to be filtered through a corporate data center. More advanced security features like web filtering, anti-SPAM, anti-phishing, ATD, etc. are available through the use of third-party security appliances.

Direct Connectivity

SD-WAN empowers organizations with the freedom to connect branches directly to a corporate data center and directly to cloud services such as SaaS applications. Connecting to cloud services has the added benefit of not requiring the traffic to route through the corporate data center.

Policy Based Management

The SD-WAN steers data based on policies (Quality of Service) configured specifically for your applications, devices, users, groups, locations and more. These policies are configured with a priority setting in which the SD-WAN utilizes to prioritize the data packets and how they are dynamically routed. The policies can be configured to meet the specific business and QoS requirements. The policies enable the SD-WAN the ability to steer traffic over specific networks, based on costs, as well as prioritization of traffic based on application, such as videoconferencing of business-critical SaaS applications.

Enhanced Security

SD-WAN solutions offer built-in security features to enhance an organization's network security to help combat typical cybersecurity concerns. These features arm a network with the tools necessary to minimize the security attack surface across the network, applications, devices, and users to ensure all aspects of the fabric are secure. One of the integral ways an SD-WAN solution achieves higher levels of security involves encryption of all packets traversing the fabric utilizing industry standard SSL/TLS techniques. Another key feature prevents unneeded data from reaching the network. This means that all packets use the shortest path available to destinations, without compromising security - SaaS traffic to well known and reputable sites can be sent directly to the destination without having to be sent through the data center, avoiding hairpinning of network traffic. At the same time, general internet traffic is inspected in real-time and automatically responded to if a threat is identified.

Improved Network Performance

SD-WAN brings awareness of traffic types that traverse through your network. An IT manager can prioritize traffic from business-critical applications as well as other services such as VoIP and web-conferencing and help steer the traffic via the most efficient route, automatically. This prioritization and steering work together to allow the IT Manager to get the best out of the available network, even minimize when network links experience packet loss and latency. Users have the ability to connect remotely via VPN.

Cost Reduction

SD-WAN reduces overall costs by allowing the use of low cost alternatives to expensive MPLS such as the public internet, broadband and LTE networks, allowing direct cloud access for the increasing use of SaaS applications, getting better results from available public networks by use of traffic shaping, prioritization of network traffic.

Cloud Adaptation

The use of SaaS applications and other cloud services are on the rise. SD-WAN facilitates cloud access throughout the network fabric, including branch offices and remote workers, which in turn removes the need to route cloud and remote traffic back through the corporate data center, thus reducing latency.

Flexible VPN Interoperability

vGR supports OpenVPN site-to-site authentication alongside IPsec/SSL, enabling secure connectivity with third-party VPNs and legacy systems. This allows seamless integration without requiring immediate hardware upgrades.

Integrated Security Capabilities

zWAN includes integrated Layer-7 Firewall and Next Generation Firewall capabilities to help organizations secure branch offices, remote users, cloud access, and internet-bound traffic from a centralized SD-WAN platform. These features provide application-aware control, threat prevention, URL/DNS filtering, intrusion prevention, SSL inspection, antivirus protection, and centralized reporting without requiring zGuardian to be positioned as a separate product.

Include these rolled-up features:

- Layer-7 firewall controls
- Stateful firewall
- IPS/IDS
- DDoS and packet flood protection
- URL/DNS filtering
- FQDN allow/block lists
- Application control
- Geo-fencing
- MAC address filtering
- Anti-adware
- SSL inspection
- Antivirus/malware protection
- Third-party domain/URL reputation filtering
- Centralized monitoring through Director/NMS

Zero-Touch Provisioning

Enterprise SD-WANs supports a secure true zero-touch provisioning of Gateway Routers. In order to onboard a device in a remote location the only required steps are to unbox the Gateway Router, plug it in and connect it to the internet. The Gateway Routers are automatically provisioned and configured to operational status. The network administrator can setup rules and policies that will be automatically applied when a matching Gateway Router is onboarded.

SD-WAN Director Deployment Options

Managed SD-WAN

AmZetta partners with Managed Service Providers (MSPs) for Customers that prefer to hand off the implementation, configuration and management of the SD-WAN network. AmZetta Partners can quickly and securely implement the SD-WAN solution using a team of highly skilled engineers. Managed Services avoids upfront investments and allows the network to be fully managed by a team of experts.

On-Prem SD-WAN

Customers running applications and services on-premise or in local data centers prefer to host the SD-WAN solution within their infrastructure. AmZetta provides an On-Prem SD-WAN solution that allows 100% total control and management to be performed by the in-house IT staff. AmZetta Solutions Engineering will remotely assist Customers in setup, configuration and management of the On-Prem SD-WAN.

Co-Managed SD-WAN

Not everyone is comfortable managing their SD-WAN network. AmZetta offers a Co-Managed SD-WAN solution where you retain 100% control over the SD-WAN while it is hosted within the AmZetta Cloud. AmZetta will configure and train your IT team on the SD-WAN Director to handle the day-to-day network operations. AmZetta will provide backend support and maintenance of the SD-WAN network.